

Transition at Three

What is the Transition Meeting?

The transition planning meeting provides you an opportunity to meet a school district representative prior to deciding to begin the transition process into a preschool special education program. At the transition planning meeting the following topics will be discussed:

- The similarities and the differences under IDEA between the early intervention system (Part C) and special education programs (Part B).
- The date early intervention services will end.
- Your priority outcomes for your child on your child's current Individualized Family Service Plan (IFSP) until his/her third birthday.
- The steps and desired outcomes of the transition process.
- Your child's future needs in relation to current services. The steps to prepare your child or a change in service delivery.

At this meeting, you can discuss alternatives to special education if you choose not to refer your child. With your consent, your early intervention service coordinator can submit records, (assessments, evaluations, IFSP and other information) to the public school district for consideration. Most importantly, you should have the opportunity at this meeting to begin to develop a mutually supportive relationship with those who may serve your child in the future.

WHO COORDINATES THE MEETING:

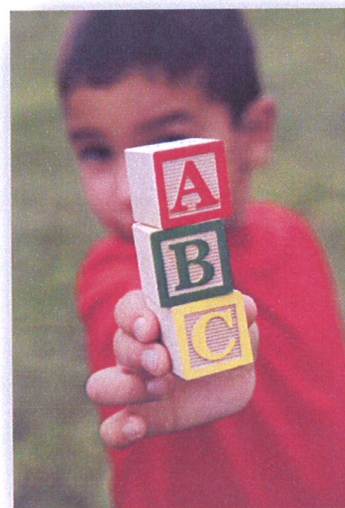
Your early intervention service coordinator convenes the transition planning meeting, with your permission, between four to six months prior to your child's third birthday. All participants at this meeting should be consulted in setting the time, date and location of the meeting, in order to find a mutually agreeable time and place, and to ensure the meeting's success. You should receive written prior notification of the meeting.

PARTICIPANTS IN THE TRANSITION PLANNING MEETING:

The conference includes you, your early intervention service coordinator, your early intervention provider, a school district representative, and other people, as you decide when planning the meeting with your service coordinator.

OTHER POINTS ABOUT TRANSITION PLANNING CONFERENCES:

At this meeting you will develop a transition plan with the participants. The transition planning meeting helps you understand IDEA procedures. The transition plan is part of the IFSP, not the IEP.

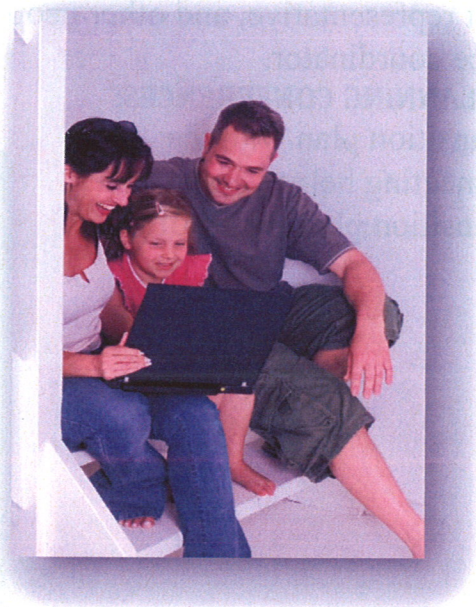


Transition at Three

What Is The Transition Process From Early Start To Ongoing Regional Center Services Beyond Age Three?

Continued regional center services will be based upon the regional center's eligibility criteria and your child's evaluation findings. If you wish to pursue ongoing regional center services after age three, your Early Start service coordinator will:

- With your written consent, request current information from physicians and other specialists who have been monitoring and treating your child.
- Determine if a developmental/ psychological and/or medical evaluation is needed to help determine whether your child will be eligible for regional center services after the age of three.
- Arrange for evaluations to be completed when your child is between 2 ½ and 3 years old.
- Review available developmental and medical evaluations and reports with the eligibility team, which includes a Frank D Lanterman Regional Center psychologist and physician, to determine if your child meets the eligibility criteria for ongoing regional center services after age three.
- Review the results of the eligibility determination with you.
- Provide you copies of evaluations completed by Frank D Lanterman Regional Center. With written consent, these evaluations can also be provided to your school district and other agencies.



Transition at Three

Who May Be Eligible For Ongoing Regional Center Service after Age Three?

To be eligible for regional center services, the disability must begin before the person's 18th birthday, be expected to continue indefinitely, and present a significant disability in three or more functional life areas. Also, the disability must be due to one of the following conditions:

- ❖ Autism
- ❖ Cerebral Palsy
- ❖ Epilepsy
- ❖ Mental Retardation
- ❖ Disabling conditions closely related to mental retardation or requiring similar treatment.

A developmental disability does not include other conditions that are solely attributable to a psychiatric, physical or learning disability.

What Happens If My Child Is NOT Eligible For Ongoing Regional Center Services?

If your child does not meet the criteria for ongoing regional center services after age three, your Early Start service coordinator will:

- Assist you with locating appropriate community resources.
- Continue to assist you with completion of the transition process until your child turns three years old.
- Complete a final review of the IFSP.
- Close your child's Early Start case when your child turns three years old and exits the Early Start program.

What Happens If My Child IS Eligible For Ongoing Regional Center Services?

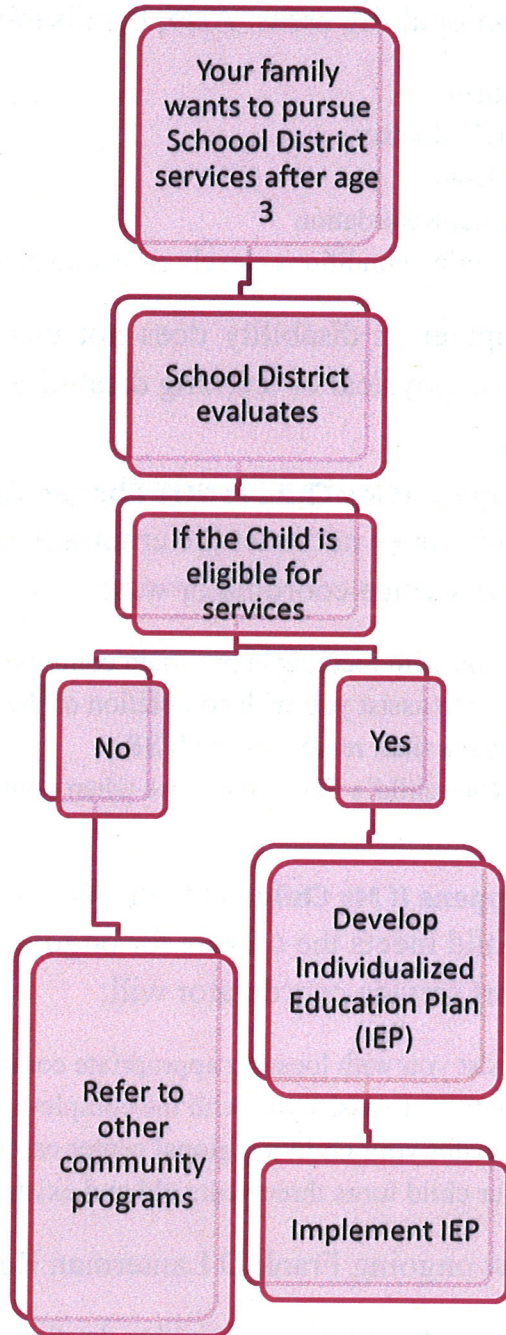
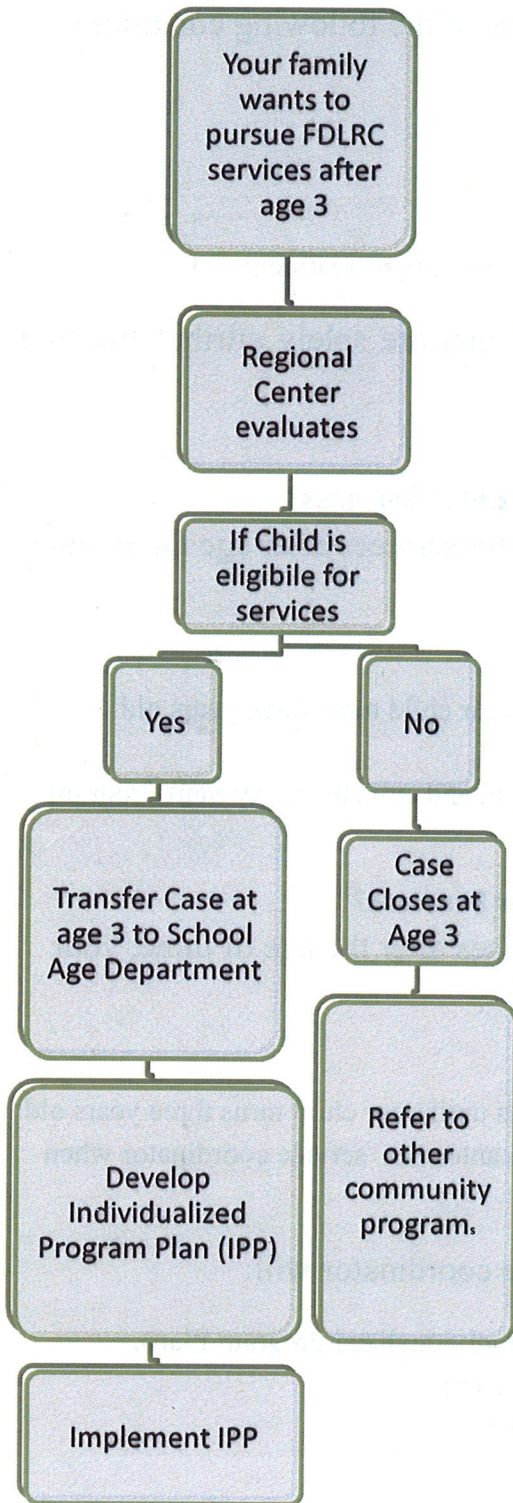
If your child meets the criteria for ongoing regional center services after the age of three, your Early Start service coordinator will:

- Assist you with locating appropriate community resources
- Continue to assist you with the completion of the transition process until your child turns three years old.
- Transfer your child's regional center case to an ongoing Frank D Lanterman service coordinator when your child turns three years old and exits the Early Start program

Your new ongoing Frank D Lanterman Regional Center service coordinator will:

- Meet with you and your child to develop your child's initial IPP (Individualized Program Plan).
- Provide continued case management services to your child in the future

Transition at Three



Transition at Three

What is Parent to Parent Support?

Some parents have found it is very helpful to talk with other parents who have been through the transition process beyond Early Start and have navigated it successfully. In our resource center, we have a number of peer support options. These options include phone calls, face to face meetings or ongoing parent support groups. Parents volunteering in these programs have received training and have the perspective of having walked in a similar path. PARENT to PARENT support partners are knowledgeable about services and options before and after Early Start. They also know how it feels to make this transition and are able to look back and evaluate how things have worked out over time for their own children and families.

During your family's time in Early Start you may or may not have utilized the PARENT TO PARENT support program. If you have been speaking to a parent from one of the programs, you may find it helpful to talk to them about the transition process your child and family are experiencing. If you are not currently receiving PARENT TO PARENT support, you may request a partner to be assigned to you by contacting your service coordinator or the KYRC family Support Specialist or KYRC Help Desk.

The Early Start Parent Support Group usually serves families with young children and may include families with children who have transitioned out of Early Start program and are receiving services after age three. If you haven't utilized a parent support group up to this point, you may find it beneficial. If you would like to attend a group, please call any of the numbers below or check the FDLRC website at www.lanternman.org to find out about parent support groups in your community,

Please feel free to call any of the following numbers for Parent to Parent support during your transition process. If you are already working with a parent, you may use the indicated space to record their number to have it handy when up want to contact them in the future.

KYRC Help Desk (213)252-5600

KYRC Family Support Specialist: _____

Parent Peer Partner _____

