

Viewpoint

You Spoke We Listened...

Social Acceptance of People with Disabilities — People with disabilities are accepted as unique individuals and are welcomed as equal participants in all aspects of community life and social interactions.

Making inclusion of individuals with developmental disabilities a genuine reality in everyday life is an ongoing focus of everything we do at Lanterman. Here are some examples of acceptance in action.

Lanterman Youngsters Make An Impact at the Assistance League

From the moment they step off the bus, the sixteen Lanterman children who participate in the Assistance League Children's Club make their presence felt. Through their interactions with staff members and their peers in the classroom, these youngsters have strongly enhanced the feeling of unity in the Assistance League family — and the sense of acceptance keeps growing.



(l to r): Oloni Binns, Ruby Perez, and Amanda Parra enjoy a snack with Lanterman consumer Linda Pak (far right).

Jean Hall, administrator of the Children's Club, believes that Lanterman consumers play an important role in broadening the horizons of their program. She has observed an exciting transition as obstinate teenage boys become conscientious mentors to their playmates from Lanterman, and younger children assume protective responsibilities for their new friends. The program runs from 7:00am — 6:00pm for students 5–13 years of age. Activities range from computer training and help with homework to organized sports. Even though the feeling of love and connection is tangible, “that does not mean that we coddle the children,” Ms. Hall emphasizes. “We continue to raise the bar for all of our children, and the Lanterman kids can and do make the jump.” By respecting youngsters with developmental disabilities and maintaining the expectations that stimulate their capacity to grow, she feels that the Lanterman children in her program have matured immensely. Many children who began with a 1:1 aide are now able to participate independently. “We may not know the answer to every problem,” she says, “but we certainly do our best to keep learning.”

The transition to becoming an inclusive program has not always been easy, but thanks to patience and perseverance, everyone is benefiting. Parents also struggle with their protective instincts, but in time become comfortable with what the program has to offer.

The successful inclusion of Lanterman children in the Assistance League's mainstream program is an encouraging step towards social acceptance of individuals with developmental disabilities. By embracing diversity and maintaining a policy of integration, the Assistance League is setting a positive example for other organizations to follow. Lanterman supports their efforts and is available to aid other groups in the transition to inclusive programs.

Shane's Inspiration — Sometimes a great sadness can result in something remarkable.

That's certainly the case with **Shane's Inspiration** — a spacious playground in Griffith Park close to the carousel near Riverside Drive.

Shane was a little boy born with spinal muscular atrophy, who

died in 1997. Out of their loss, his parents — Scott Williams and Catherine Curry-Williams — were inspired to build a two-acre playground for children with all levels of physical ability, a playground Shane could have shared with other youngsters.

Following a model on the East Coast called *Boundless Playgrounds*, and guided by the input of over 1,000 children and parents who participated in “dreaming and design” parties, the Williams created a universally-accessible, fully-integrated space.

Seventy percent of the area allows children with disabilities to play side by side with their non-disabled friends. The swings are large and designed to support children who have physical needs. The towers and forts are connected by wheelchair ramps. There's a castle, dinosaurs, and even a stationary train.

It's a magical place of fun, and a loving place of acceptance. And it's become the most popular playground in Los Angeles — for all children.

“It was an idea whose time had come,” says Catherine Curry-Williams, “and we were the catalyst. But it's succeeded way, way beyond our expectations.”

Shane's Inspiration has transformed a park playground into a celebration of inclusion as children of all abilities play together — and parents of all communities share their experiences. There's no other place like it on the West Coast — yet. Plans are already underway for **Shane's Inspiration** in Westwood, Pacoima, Torrance and Pico Rivera. And that's just the beginning . . .

John Poulos — Going After His Dreams

John Poulos, a consumer at the Frank D. Lanterman Regional Center, is readying a set of court documents, and setting up a case file — not for himself, but for attorneys at the



John Poulos with his boss, Tina Karos

offices of Melvin Horowitz. That's where John is competitively employed as the File Manager.

John's motto is “always believe in yourself and never give up” — and it was this determination that kept him looking for jobs. “John's got these amazing people skills and from his ability to talk to people he's

continued on page 3



FROM THE President



It's no coincidence that two of our seven customer values deal with advocacy and self-advocacy.

In other words, our Lanterman community finds it vitally important to make sure people with developmental disabilities and their families have the supports and skills necessary for them to access the opportunities they need to live their lives the way they choose.

And one of the principal ways to do that is to let our elected representatives know our position on issues and legislation which affects us.

That is particularly urgent right now as the regional center system faces two important matters. One is the critical shortage of funding to pay direct care workers a sufficient and competitive wage.

Nearly 1,000 people rallied near the governor's Los Angeles office recently to raise consciousness and gather support to persuade our lawmakers and governor to reevaluate funding for the Department of Developmental Services in the May budget revisions.

Demonstrators pointed out that people who are entrusted with the care of the most fragile members of our society can make more money working in a fast-food restaurant. This is unacceptable.

A related issue has to do with AB896, introduced by Assemblywoman Dion Aroner. This bill calls for the state to close the developmental centers and transfer their residents, assets and programs to the regional center system, making a unified service delivery system, and providing the resources necessary to hire and retain qualified direct care staff.

We're asking all the members of our Lanterman community to express their support for these two issues. You can learn more and register your opinion by accessing our website, www.lanterman.org and clicking on the:



icon.

This will connect you to ARCA where you can read about all legislation affecting the regional centers, and write a letter in support of AB896, as well as more funding for wages and community-based services in the May budget revisions.

It's time to let your voice be heard.

Steve Beltran

Steve Beltran
President, Lanterman Board of Directors

Roberta Louise Happe

A Passion for Caring and Commitment

It is with great sadness that Lanterman reports the death of staff member, Roberta Happe. Roberta was a dedicated contributor to the Lanterman community, and a beautiful individual who touched the lives of all those around her.

Remembered by family, friends, colleagues, and people with developmental disabilities, Roberta is recalled as someone who fulfilled her namesake — Happe, pronounced “Happy” — in every way. At just 23 years old, Roberta managed to impact not only her family and friends, with whom she held strong bonds, but also her childhood playmates, her high school teachers and classmates, her college alma mater, her co-workers and people with developmental disabilities in the Lanterman community, and even those acquaintances that Roberta had a way of becoming close with.

At her memorial service held at Crescenta Valley High School, more than 1,000 people gathered to celebrate and honor Roberta’s life. Speaker after speaker recounted her enthusiasm, commitment, and generosity of spirit in helping others. Roberta’s contributions to the Lanterman community are just an example of how her spirit affected those around her.

Koch♦Young Family Resource Center

A graduate of the University of Southern California, Roberta joined the staff of the Koch♦Young Family Resource Center (FRC) in the fall of 1999 working as a temporary employee. She was soon offered the position of Resource Center Coordinator, a role that she filled well. Roberta’s duties included developing, coordinating, and managing the information flow in the FRC.

At any given moment, one might have found Roberta answering the Help Desk telephone, providing an orientation tour for new service coordinators, trafficking logistics for an upcoming FRC event, or simply assisting a family at the FRC Help Desk. In addition to these responsibilities, Roberta served as the editor of the Viewpoint, the quarterly newsletter for the Frank D. Lanterman Regional Center, helped to organize the Assistive Technology Project and its computer training class, coordinated the maintenance of the Lanterman web site, and managed the overall dissemination of information on disabilities and public awareness events sponsored by the Center.

Beyond Lanterman

Roberta’s achievements were not limited to her work at Lanterman. At both Crescenta Valley High School, and the University of Southern California, Roberta was an active member of the student body and made her presence felt. During her junior and senior years of high school, she was the director of school spirit, played on the soccer team, and participated in the school’s drama program. Roberta made those around her feel special, including the teachers and principal at Crescenta Valley High. At her memorial, many shared the personal gifts that she had given them, and talked about the unique and inspirational student that Roberta was. Her legacy continued at USC, where Roberta was an active member of the Helenes, a women’s spirit and community service organization, a “brother” in the business fraternity, Alpha Kappa Psi, and unquestionably the most dedicated Trojan fan around. Roberta graduated from the USC Business School in May of 1999.

Celebration of Life

Roberta’s good nature and enthusiasm for life was infectious. This extraordinary character was the result of her family’s love and amazing strength. In this time of hardship, the Happes’ wish is to focus upon the beautiful life that Roberta lived. It was with this in mind that they organized a memorial that truly highlighted the spirit that Roberta possessed and so openly shared with all those she met. As painful as it is to bear the senseless and tragic nature of Roberta’s death, the memorial marked an effort to instead hold onto all that Roberta gave to us in the short time that we were graced with her presence.

If you would like to express your thoughts and memories of Roberta, Lanterman is organizing a **Book of Remembrance** for the Happe family. *The book will be available at the Koch♦Young FRC through April 15, 2001.* You may also email your tribute to frc@lanterman.org.

Spirit

Lanterman is marked by the special spirit and heart of its people: a passion for caring and commitment that gives our work its true life. A prevailing culture of willingness and a readiness to volunteer characterize the people of Lanterman.

— a Lanterman core value



Roberta’s Legacy

The Gift of a Willing Spirit

The following remarks were made by Executive Director Diane Anand at the memorial celebration to honor the life of Roberta Happe

I feel blessed to have known Roberta. Roberta was a golden person who was endowed with many gifts—some tangible and some intangible. I would like to share some thoughts with you about what I believe was Roberta’s special gift, the insight that it imparted to us, and its legacy. The gift of a willing spirit.

I would first like to set the scene. The year was 1999, my assistant of 20 years had just retired. Though I had another very capable person working with me, we needed additional help. Roberta had just graduated from the University of Southern California with a degree in business. Her dream job was “event

planner”; she was “temping” while going on job interviews; and she had no relevant education or experience in the field of developmental disabilities.

I relate this for two reasons. First, “credentials” are important to us as a professional organization. If Roberta had applied for a position she would have been screened out as not having the correct qualifications. In all likelihood, Roberta never would have applied for a position with the Regional Center anyway; she was headed in a different direction. And secondly, because her lack of proper credentials proved to be a factor in an important insight Roberta imparted to us.

Looking back, I think it took all of a day or maybe two to begin to realize that we had an extraordinary person in Roberta. It took somewhat longer to realize that it didn’t much matter that her degree was in business nor that she had no relevant experience.

From the very beginning Roberta’s spirit of willingness was evident in very tangible ways. Roberta was willing to take initiative — always to work collaboratively, to learn, to be challenged, to grow and to pursue excellence in all she undertook.

Roberta was willing to help others — always. And not just to help but to give of herself. Roberta was willing to embrace life joyfully. Most of all, she was willing to believe in the inherent value of every person regardless of their ability or disability — unconditionally. And although she was a Trojan through and through, she was even accepting of those of us who are Bruins.

Roberta was not simply willing, she was willing with warmth and enthusiasm. I believe that it was this spirit that fueled her signature happiness.

The insight that Roberta imparted to us was this: Although “credentials” have their place, willingness of spirit makes all things possible.

The legacy that Roberta bequeaths to us is this willing spirit. Each of us has the volition to accept this gift from Roberta. Although her gift had been given to her in abundant measure, each of us in our own way, in consciously accepting this gift, can demonstrate more willingness in our personal lives and in our work.

This is Roberta’s legacy. It is a legacy that lasts. So if you and I want to remember Roberta, to honor her, in a real way, the next time someone asks for help say “yes, I will,” and say it the way Roberta would have — with warmth and enthusiasm.

Roberta Happe Memorial Internship

In tribute to the life of Roberta Happe and to the contributions she made to the Lanterman Community, the Board of Directors has initiated plans to sponsor the *Roberta Happe Memorial Internship*. The internship will provide opportunities for students of promise to gain knowledge and experience in the area of family support.

The Frank D. Lanterman Regional Center’s mission is anchored on a set of core values. One of these core values is *Spirit*. It is a value marked by the special spirit and heart of its staff, consumers and families and is characterized by a passion for caring and a personal commitment that gives our work its true life. It is a spirit that nurtures a prevailing culture of willingness and a readiness to volunteer.

In her all-too-brief career and life Roberta Happe exemplified the spirit contemplated within the Lanterman core values. The *Roberta Happe Memorial Internship* will be an opportunity to honor Roberta’s example and to remind us all of the importance of the human spirit in our endeavor to serve and support the Lanterman community.

Checks should be made payable to Frank D. Lanterman Regional Center. Designate the Roberta Happe Memorial Internship Fund.

The Lanterman Board

PROFILES IN COMMITMENT



Reynalda Sanchez

One of our newest Board Members is energetic Reynalda Sanchez. A member of the Consumer Advisory Committee for the last three years where she's been the source of many creative ideas, she's been described by her fellow volunteers as "committed to doing work for Lanterman."

Reynalda is also very active in self-advocacy and has been a participant and presenter at the statewide Self-Advocacy Conference. Speaking of

her involvement, Reynalda says that she wants "to pay back the regional center for all that it has done for me."

Outside of her involvement with Lanterman, Reynalda has worked as a babysitter for two years. Currently, a service coordinator is assisting her in applying for a work permit. Once the application process is complete, she plans to pursue employment. In her spare time, Reynalda enjoys going to the gym and spending time with her sister.



Karen November

Karen November's interest in people with developmental disabilities stems from her experience with her adult sister who has Down syndrome. In addition, her professional experience — she has both a Master's in Gerontology and a Master's in Public Administration — working with older adults, makes her an invaluable addition to the Lanterman Board.

She plans to apply her creativity and knowledge to focus on planning for individuals as they age. "I'm very

interested in filling gaps for families in terms of services that are needed, particularly for people with developmental disabilities as they get older. There are significant issues for this population that must be addressed. I also think it's very important for Lanterman to continue developing the Assistive Technology Lab."

When she's not working in her field or volunteering at Lanterman, Karen's busy with her three daughters, ages 13-3.

Biz2Biz.com Partners with Lanterman Regional Center

Lanterman Regional Center has received a generous grant from Biz2Biz.com, a company started by Board Member Jeff Richards. The grant will allow Lanterman unlimited use of the firm's online news release distribution service, Biz2BizPRESS.com. With over 50,000 media contacts, the site serves small and medium-sized businesses, public relations practitioners, and the editorial community.

In addition to access to the news distribution service, Biz2Biz.com will also provide support to our Business Advisory Committee by distributing Lanterman press releases to Southern California businesses that support its efforts.

"By offering us public relations counsel, news releases, media relations and other support, Biz2Biz.com will help us tell our story to the greater Los Angeles community," says Patricia Herrera, Lanterman Director of Family Support Services. "The result will be a public much more aware of and sensitive to the needs and potentials of individuals with developmental disabilities."

Biz2Biz.com, is designed to help companies build their businesses online. There are 82 verti-



cally targeted portals already operational within the Biz2Biz.com network. Focusing on small- and medium-sized manufacturing businesses in North America, Asia, and Europe, Biz2Biz.com brings innovative Internet technologies and network applications that automate transactions and the flow of information and work between buyers, sellers, and co-workers.

The site provides businesses with a centralized location for all search, support, collaboration, and transactions, which allows them to interact with customers, suppliers, and partners more dynamically than ever before. For more information, visit www.Biz2Biz.com

You Spoke We Listened ...

continued from page 1

created this amazing group of friends. He will network with these friends and also cold call companies to see if they need help," says his sister Mary Liapold. His networking skills put him in touch with Tina Karos at the law office. "Tina is an incredible woman, she's so supportive and would be an angel for anybody to work with," says Mary.

"John came at a great time for us," says Tina. "The office needed organizing after we moved and John has done a great job going through files, setting them up and helping us rearrange the office. He's always coming up with ideas to improve things here." John describes the office and his fellow employees as an easy working atmosphere. "The people I work with are very good to me" he says.

John is planning to pick up new skills and then move on to a higher level job. He's taking a computer class at Lanterman as well as volunteering with Martin Sweeney, Project Coordinator for the Lanterman's Assistive Technology Project.

"The best part about this is that John loves to work, and now that he is, his self-esteem is way back up," says Mary.

HOPE Worldwide Partners with Lanterman Regional Center

Lanterman Regional Center is pleased to announce a partnership with HOPE Worldwide Los Angeles, a volunteer organization that develops programs with a long-term impact, primarily for children and families in the greater Los Angeles area. The group is a faith-based charity, which was founded in 1991 by the International Churches of Christ. A subsidiary of HOPE Worldwide Ltd., their mission is to bring hope to a hurting world through the programs they have developed in 85 countries.

They have partnered with Lanterman to support the Best Buddies program, which matches adults with developmental disabilities (Buddies) to interested individuals (Citizen Buddies) in the community.

The partnership between Lanterman and HOPE Worldwide was created thanks to Service Coordinator Dora Saki who approached Patricia Herrera, Lanterman Director of Family Support Services, about volunteer projects for the organization. The Best Buddies program was an obvious choice as Citizen Buddies were desperately needed. Today, four groups of HOPE Best Buddies are building friendships through various activities including bowling, movies, shopping, e-mailing and just spending time together.



HOPE Worldwide continues to support other Lanterman projects as well. The organization sponsored a Toy Drive as part of the Holidays Are For Sharing campaign which collected 500 toys for distribution to Lanterman families in need. HOPE Worldwide also provides local programs in the eight counties of Greater Los Angeles including distribution of food to the working poor, providing after-school tutoring, computer skills training, golf and tennis instruction, adoption assistance and assistance for seniors.

HOPE Worldwide is looking forward to pairing up more Best Buddies and partnering with other Lanterman projects as well. For more information, you can view their website at www.hopeworldwide.org

Viewpoint

Viewpoint is a quarterly publication of the Frank D. Lanterman Regional Center. It is produced for the benefit of all members of the Lanterman Community.

Estimated Circulation: 6500

Managing Editor:

Patricia Herrera
DIRECTOR, FAMILY SUPPORT SERVICES

Assistant Editor:

Lisa Levin

Additional Editing:

Roberta Happe
RESOURCE CENTER COORDINATOR
KOGI-YOUNG FAMILY RESOURCE CENTER

Photography:

Alma Flores
Lisa Levin
John Poulos

Contributors:

Diane Anand, Jackie Ashman, Steve Beltran, Kathleen Boss, Catherine Curry-Williams, Alma Flores, Ken Morris, John Poulos, Melinda Sullivan, Sam Suzuki, Marty Sweeney, Maureen Wilson.

Viewpoint can be viewed online at <http://www.lanterman.org>
To contact Viewpoint Editors, send e-mail to frc@lanterman.org or call (213) 383-1300, ext. 730.

SUMMER RECREATION

OPPORTUNITIES

Hard to believe, but summer's almost upon us — and with it the search for outdoor leisure activities for individuals or family members with developmental disabilities. To help you access information about recreational opportunities directly, we've established the Electronic Resource Directory (ERD). You can access it via the internet at www.lanterman.org

The ERD is a work in progress and currently has only recreational resources listed. If you have a resource you would like to recommend, please contact the Koch♦Young Family Resource Center at 1-800-546-3676.

Some of the resources are programs that specialize in working with people with developmental disabilities. Others are generic, meaning that they work with the community at large, but are making strides toward including people with disabilities in their programs.

We've provided this information to help adult consumers and families locate low-cost recreational activities. This doesn't necessarily mean Lanterman will purchase these services. Funding is determined on a case by case basis as documented in your Individual Program Plan. Please contact your service coordinator if you have questions.

The following are some examples of resources that families can access from the Electronic Resource Directory.

Generic Resources

Shane's Inspiration is a spacious playground in Griffith Park close to the carousel near Riverside Drive. Shane was a little boy born with spinal muscular atrophy, who died in 1997. His parents built this two-acre playground for children with all levels of physical ability. The swings are large and designed to support children who have physical needs. The towers and forts are connected by wheelchair ramps. This playground is a nice addition to Griffith Park, and a no-cost way to spend a summer day. Pack your picnic basket and enjoy!

American Youth Soccer Organization (AYSO) has a special program called VIP (Very Important Person) which adapts soccer to persons with disabilities. Any parent can start a VIP soccer team. Call Cindy Seymark at (877) 475-2976 to see if there is a team in your area, or if you are interested in starting a team.

Armory Center for the Arts is located in Pasadena and provides a full range of mainstream art instruction. Disabled students are evaluated for entry on a case by case basis. There are spring and summer sessions, and some classes have Spanish-speaking instructors. Call (626) 792-5101 and speak with the office manager.

Creative Arts Center in Burbank provides a variety of opportunities through the Club Adaptive Program, including arts and crafts, music and dance, community outings, games and sports. The age range is 5-18. Classes are conducted at Verdugo Park. Call (818) 238-5397 for more information.

Melba Morris Ballet Class is located in Los Angeles, where Ms. Morris has worked with individuals with developmental disabilities and hearing impairments. She accepts students on

a case by case basis. Ballet classes are one hour a week. Call her at (323) 258-9803 or reach her at mmballet@juno.com.

Plaza de la Raza offers art and cultural experiences, including music, dance and visual arts. Fees are low, and participants range in age from 5 to adult. Programs run year round, restarting every ten weeks. They are located at 3540 N. Mission Road and can be reached at (323) 223-2475 or at adm@plazadelaraza.org.

Hollywood YMCA offers a variety of services including a weight room, gym and pool. They are located near Sunset and Wilcox, and can be reached at (323) 467-4161 for specific details.

Jewish Big Brothers Association offers residential summer camps for Jewish boys and girls with disabilities, ages 5 to 12. For more information, please call (323) 761-8675.

Boys & Girls Club of Pasadena, located at 3230 E. Del Mar Blvd., mainstreams individuals on a case by case basis into their camps, crafts and sports programs. For a schedule of activities, you can call (626) 449-1953.

Adaptive Recreation Program of Pasadena sponsors a variety of recreational activities year round. They offer specialized camp opportunities, as well as including individuals with disabilities into camps run by the Department. For more information call Jackie Arnett at (626) 398-1257.

Pickwick Recreation Center in Burbank offers a variety of recreation activities, including bowling and equestrian. Call (818) 845-3199 for further details.

Glendale YWCA offers a variety of programs and classes including swimming. Contact them for more information at (818) 242-4155.

Jewish Programs for the Disabled (Chaverim) offers activities throughout the Los Angeles area for Jewish adults with developmental disabilities. Activities include bowling, miniature golf, music, dances and seasonal dinners. Call (818) 884-1092 for more information.

New Directions provides vacation travel plans for people with developmental disabilities. These are actual day and overnight trips. Call (805) 967-2841 to be put on their mailing list.

Eagle Rock Little League has been including young children in the T-ball division. Practices are at Yosemite playground. For more information call Joel Zimmerle at (323) 258-6536.

Special Olympics is a year-round program focusing on a variety of sports. Call the Culver City office, (310) 215-8380 to learn about seasonal activities.

Foothill/Pasadena Area

Holy Family C.A.M.P. (Children with Autism Making Progress) is a six-week day camp in South Pasadena. Please call (626) 744-7949 for further information.

South Pasadena YMCA offers special swimming lessons. For information, call (626) 799-9119.

LL Frank Center, sponsored by Ability First, offers a day camp in Pasadena. Call (626) 449-5661 for more information.

Tom Sawyer Camp, Inc. in Altadena offers summer day camp. Call (626) 794-1156 for a schedule.

Los Angeles Area

Etta Israel-Camp Avraham Moshe is located in Los Angeles, and provides day camp opportunities for children. Please call (310) 285-0909 for more information.

Elysian Park Adaptive, located near Dodger Stadium, provides day camp opportunities for children and young adults. You can reach them at (323) 226-1402 for further information.

L.A. Goal is located in Culver City and provides a variety of leisure opportunities for adults. Call them at (310) 838-5274 for a schedule of their events.

Jeffrey Foundation in Los Angeles offers day camp opportunities for school age individuals. For details, call (323) 965-7536 and ask to speak with Gabriella.

JEMS Camp (Japanese Evangelical Missionary Society) sponsors an annual camp at Ponderosa Lodge at Mt. Hermon. This camp serves children of Asian descent, who are 9 years of age and older with a developmental disability. Campers must be ambulatory and perform their own self-care activities. For more information call (213) 613-0022 or go to www.jems.org

UCLA offers a **Movie Day Camp** for individuals with developmental disabilities between the ages of 10–18. Call (310) 206-6150 for more information.

Southern California Area

Camp Joan Mier and **Camp Paivika** are both sponsored by Ability First, and offer a variety of camping experiences for all ages. For information on Camp Joan Mier, call (310) 457-9863, and for Camp Paivika, call (626) 396-1010.

Easter Seals offers a residential camp program at various camps in San Diego County. Call (619) 336-0630 for more information, or call (831) 684-2166 to find out about possible camps in your area.

Exceptional Children's Foundation offers residential camp opportunities in the San Bernardino Mountains. Call (323) 290-2000 for details.

Jay Nolan offers both day and residential camp opportunities. Call (818) 361-6400 for details.

Southern California Network coordinates camping trips for families with infants and preschool children with visual impairments. Call (714) 573-8888 and ask for Kathy Goodspeed.

Special People's Foundation provides travel and camping services for people with developmental disabilities. Call (310) 618-1833 for more information.

Lanterman's Los Angeles Basin Community Advisory Council is again sponsoring a **Leisure and Recreation Forum**, where people can learn about local, community-based recreation activities. This is an opportunity for families to get their questions answered regarding cost, inclusion possibilities and more. The date of the forum has been set for May 8, at the Braille Institute. Contact your service coordinator or Sam Suzuki, Regional Manager, at ext. 559 for more details.

One System... One Focus

California's developmental services system is in a state of crisis impacting all 21 regional centers and the five remaining developmental centers.

Among the many challenges regional centers face, one of the most critical is the serious lack of resources to pay direct care staff the kind of wages that will attract and retain qualified people. On the other hand, the state's aging developmental centers are in severely sub-standard condition, with an estimated \$1.6 billion needed for their repair.

These two challenges present the opportunity to act on an idea that has been around for some time, and is now gaining support — unify the service delivery system.

Thirty-five years ago, California stopped building institutions and created regional centers to serve people with developmental disabilities. This community-based system dramatically changed the approach to care and demonstrated that any individual — regardless of the nature or extent of the disability — can, with proper support, live in the community as an active, participating member.

However, the developmental centers have remained in place as a parallel, but separate entity, creating an artificially and inefficiently divided service system which should serve the same population and share a common purpose, but instead forces regional centers and developmental centers to compete rather than cooperate — often at the expense of the people they serve.

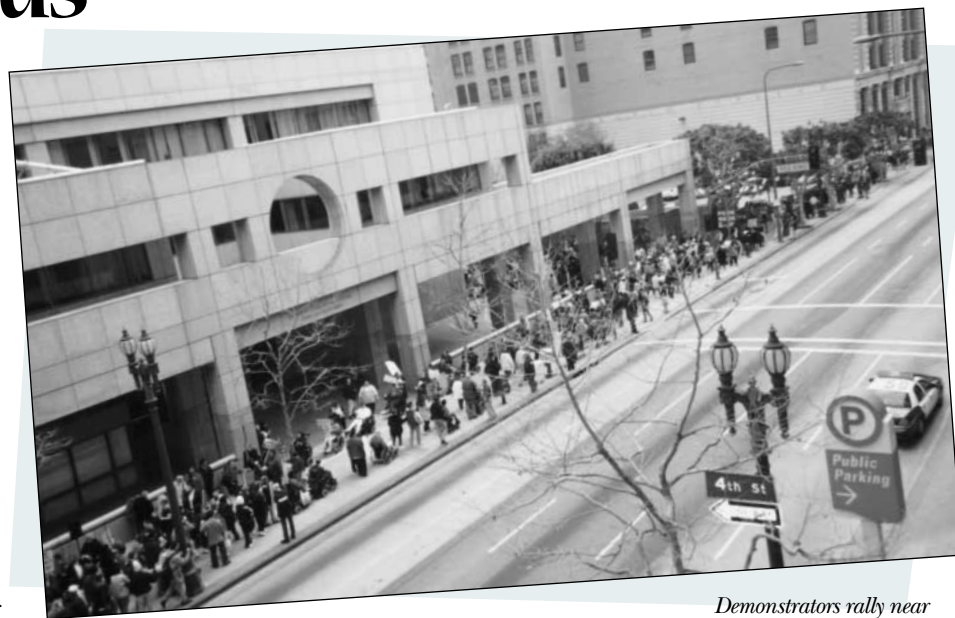
In essence, the State of California runs two systems to discharge its responsibilities under the Lanterman Act. But the regional centers —

because they are community-based — do so not only more cost-effectively, but also in a more enlightened way, focusing on support, choices and the inclusion — of individuals with disabilities into mainstream society.

Currently, the Department of Developmental Services spends an average of \$166,753 per client per year for the 3800 residents of the state-run developmental centers. It allocates an average of \$11,659 per client for those living at home or in private care facilities in the community. In other words, about 25% of the state's resources go to serve about 2% of the system's users. And at the same time, new statutes and mandates require the regional centers — the heart of the community care system and currently serving more than 160,000 people — to do more and more with less and less.

Assemblywoman Dion Aroner has introduced legislation to change that. AB896 proposes that the state gradually close the developmental centers and transfer their residents, assets and programs to the regional center system.

The law makes clear that institutional care is an option only for those people who cannot



Demonstrators rally near governor's Los Angeles office to raise awareness on funding concerns.

be served in the community. Integrating developmental center services into the existing community service delivery system would be effective for everyone. Regional centers would gain much-needed resources to develop and staff community living options, and could also purchase services from the developmental centers, much the way they do with other programs.

Unifying the system would also help create uniform rates and standards of quality, ensuring the ability to hire the most qualified individuals, and allow regional centers to continue to do what they do so well — enable people with developmental disabilities to live full, productive, satisfying lives as active members of their communities.

www.lanterman.org

Great information with a click of your mouse!

by Roberta Happe

Have you visited the Lanterman website recently? If you haven't, you're in for some big surprises. The site is filled with lots of new interactive, helpful information for everyone in our community. Here's a sample of what we've added:

- **Lanterman's Electronic Resource Directory (ERD)** — a searchable database of resources for families and consumers. The ERD is a work in progress, and Social/Recreation resources are the first group in the database. Look for Doctors, Dentists, and Childcare resources in the next year. Also, be ready to give us *your* resources in the coming months, as we unveil the resource addition option.
- **The Koch•Young Family Resource Center Library is online** — Now you can browse the entire Lanterman collection or search for items on a specific topic. If you find an item you would like to check out, give us a call. We'll see if it's available and make arrangements to have you pick it up — or we'll deliver it to one of our drop off locations.
- **Legislative Updates** — Get the latest information on current bills in the California Legislature, by way of a link with the ARCA legislative page. Look to see what bills are being supported or opposed, and do your part by writing e-mails to key legislators right from the site.
- **The Guide to Regional Center Services** — This comprehensive roadmap to the regional center is now available online. Find out more about what a developmental disability is, how to work with your Service Coordinator, your rights and responsibilities, and other useful information.
- **Funding Guidelines** — Access the most up-to-date information on how we fund services, including guidelines for Behavior Management, Independent Living Skills, Early Intervention, and other services.
- **Training and Events** — Check out the upcoming training and events going on at Lanterman.
- **Information and Support** — Find a support group, get involved in a community meeting, or get matched with a Peer Support Partner.
- **Important News For You** — If it's important and it impacts people with developmental disabilities, we'll tell you about it in our *Alert* section.

This is just a sampling of the information available on the Lanterman website. We're adding new pieces continuously, so check back often to see what's new. Also, let us know if there is something you think needs to be on our site. Contact the Koch•Young Family Resource Center at 1-800-546-3676 with your ideas and suggestions.

2000 Holidays Are For Sharing Brings Smiles to Lanterman Families

You could see the joy on their faces... the faces of the children receiving gifts, the faces of the parents watching their children, and the faces of the staff and volunteers who spent hours gathering, sorting and distributing gifts.

For the 20th year in a row, Lanterman Regional Center has sponsored the *Holidays Are For Sharing* program as a part of our Client Help Fund. Its mission is to provide consumers and families with donations of gifts, food certificates and funds to fill special needs during the holiday season. As always, Lanterman staff, service providers and outside organizations outdid the previous year's totals.

We received \$26,319.46 in cash contributions along with \$26,453 in gift and toy donations. In addition, 37 families were "adopted" as part of the Adopt-A-Family program, including 16 families adopted by La Curacao.

Special thanks go to Hope Worldwide, a non-profit organization that provides services and help to people who need it most, for setting up a toy drive for Lanterman. The drive collected 500 toys. Thanks also go to Toys for Tots for their donation of \$10,000.00 worth of toys, as well as Disney, Tess Clothing Manufacturer and ARS Workshop. Tess will continue to donate new clothing items throughout the year. In total, *Holidays Are For Sharing* collected \$61,372.46, an increase of 33.4% over last year.

However, need knows no season, and the Client Help Fund seeks your help year round. If you or someone you know would like to make a donation, please contact Jackie Ashman at (213) 383-1300 ext. 684.



Members of the Zuniga family, (l to r) Marilyn, Cynthia, Enrique, Jose and Jewel, open presents with Meredith Schultz (front).

Training & Events

The Training & Development Unit provides information on training opportunities that focus on developmental disabilities and related topics. The unit staff coordinates training events that are conducted by Lanterman Regional Center. Staff also coordinates registration arrangements for consumers, family members, staff, board members and service providers in the Lanterman Community to attend external educational events of special interest.

The Center publishes a Training and Events webpage that is accessible via the website www.lanterman.org.

If you are a parent or consumer in the Lanterman Regional Center service area and are interested in attending a training opportunity outside the Regional Center, contact your Service Coordinator. For consideration, your request must be received by Training and Development three weeks prior to the posted conference deadline. We welcome your suggestions for future training topics and information on upcoming educational events that we can share with others.

You may send comments or request to be on the mailing list by one of the following options:

BY MAIL:

Training & Development
Lanterman Regional Center
3303 Wilshire Blvd. Suite 700
Los Angeles, CA 90010

BY FAX:

(213) 383-6526

BY E-MAIL:

Maureen S. Wilson, Director
Maureen.wilson@lanterman.org
Ronna Kajikawa, Executive Assistant
Ronna.kajikawa@lanterman.org

Lanterman Regional Center Family & Consumer Training

The following are training opportunities that focus on developmental disabilities and related topics and are conducted or sponsored by Lanterman Regional Center for consumers, family members, and board members in the Lanterman Community.

NEW FAMILY ORIENTATION

Lanterman Regional Center provides Orientation Meetings to welcome new consumers and families to the Center. These meetings provide an introduction to the Lanterman service delivery system.

For a schedule of monthly Orientation Meetings, please call (213) 383-1300 ext. 705.

NEW FAMILY ORIENTATION FOR CHILDREN THREE YEARS OLD AND OLDER

English & Spanish Last Friday of Every Month.
9:30 a.m.–10:30 a.m. English, 10:30 a.m.–11:30 a.m. Spanish.
Lanterman Regional Center, FRC
3303 Wilshire Blvd., Suite 700
Presenters: LRC Staff

For Information and Dates call (213) 383-1300 ext. 705

NEW FAMILY ORIENTATION FOR EARLY INTERVENTION FAMILIES (BIRTH TO 3 YEARS)

English & Spanish, Last Monday of Every Month.
9:30 a.m.–10:30 a.m. English, 10:30 a.m.–11:30 a.m. Spanish.
Lanterman Regional Center, FRC
3303 Wilshire Blvd., Suite 700
Presenters: LRC Staff

For Information and Dates call (213) 383-1300 ext. 705

BEHAVIOR MANAGEMENT WORKSHOP FOR PARENTS

This 20-hour course was developed for Lanterman Regional Center Families by the UCLA-University Affiliated Program. The training is a proactive approach where families learn strategies to manage behavioral concerns. More serious behavioral issues should be discussed with your Service Coordinator. **Please note: This workshop requires referral from your Service Coordinator.**

Contact your Service Coordinator to register.

ENGLISH (10 CONSECUTIVE TUESDAYS)

April 3, 2001–June 5, 2001, 7:00 p.m.–9:00 p.m.
Easter Seals, 315 Arden Ave., Glendale, CA
Presenters: Behavioral Specialist

For Information and Dates call (213) 383-1300 ext. 705

SPANISH (10 CONSECUTIVE SATURDAYS)

April 7, 2001–June 9, 2001, 9:00 a.m.–11:00 a.m.
Shriner's Hospital, 3160 Geneva St., Los Angeles, CA
Presenters: Behavioral Specialist

For Information and Dates call (213) 383-1300 ext. 705

BODY TALK

SEXUALITY & SOCIALIZATION TRAINING

Body Talk is a new Sexuality and Socialization Training program specifically designed for adult individuals with developmental disabilities. Each group will accommodate 12–15 consumers and run for 12 weeks. The training will cover topics such as human anatomy and reproduction, developing social skills, prevention of exploitation, human sexuality, sexually transmitted diseases, birth control, and health and hygiene. Teen Talk addresses issues specific to pre-adolescence through young adulthood. Parent Talk is a 6 week class designed to address parental concerns and will focus on the parental role in supporting and promoting healthy relationships.

BODY TALK FOR ADULT CONSUMERS

Please note: This workshop requires referral from your Service Coordinator.

Dates, Times & Location TBA

Contact your Service Coordinator to register.

TEEN TALK FOR CONSUMERS

Please note: This workshop requires referral from your Service Coordinator.

April 24–July 10, 2001, 4:00 p.m.–6:00 p.m.
(Twelve consecutive Wednesdays)
BCR, 230 E. Amherst Dr., Burbank, CA

Contact your Service Coordinator to register.

PARENT TALK DISCUSSION GROUP

This 6 week group will focus on the parental role in supporting and promoting healthy relationships. **Please note: This workshop requires referral from your Service Coordinator.**

Dates, Times & Location TBA

Contact your Service Coordinator to register.

KEEPING OUR CHILDREN SAFE

For Parents
April 23, 2001

6:00 p.m.–8:00 p.m.
Lanterman Regional Center
3303 Wilshire Blvd., Suite 700, Los Angeles, CA

This 2 hour in-service will help parents recognize signs of child abuse in young children with developmental disabilities.

Cost: No cost

Presenter: UAP-Childrens' Hospital Project Heal Staff

For information call (213) 383-1300 ext. 720

TOOTH TALK

For Parents
May 9, 2001

4:30 p.m.–5:30 p.m.
Lanterman Regional Center
3303 Wilshire Blvd., Suite 700, Los Angeles, CA

This training is designed for parents stressing the importance of healthy teeth and preventive dental care for people with developmental disabilities.

Cost: No cost

Presenter: LRC Dental Hygienist Staff

For information call (213) 383-1300 ext. 720

Lanterman Regional Center Service Provider In-Service Training

The following are training opportunities that focus on developmental disabilities and related topics and are conducted or sponsored by Lanterman Regional Center for service providers in the Lanterman Community.

NUTRITION & FOOD PREPARATION & STORAGE

For Service Providers. This 2 hour service provider in-service will help community residential staff plan and prepare nutritious healthy meals for consumers in the care. This class meet the requirements for 2 hrs CEU's for Title 17 & Title 22.

April 10, 2001, 10:00 a.m.–12:00 p.m.
Lanterman Regional Center
3303 Wilshire Blvd., Suite 700, Los Angeles, CA

Cost: No cost

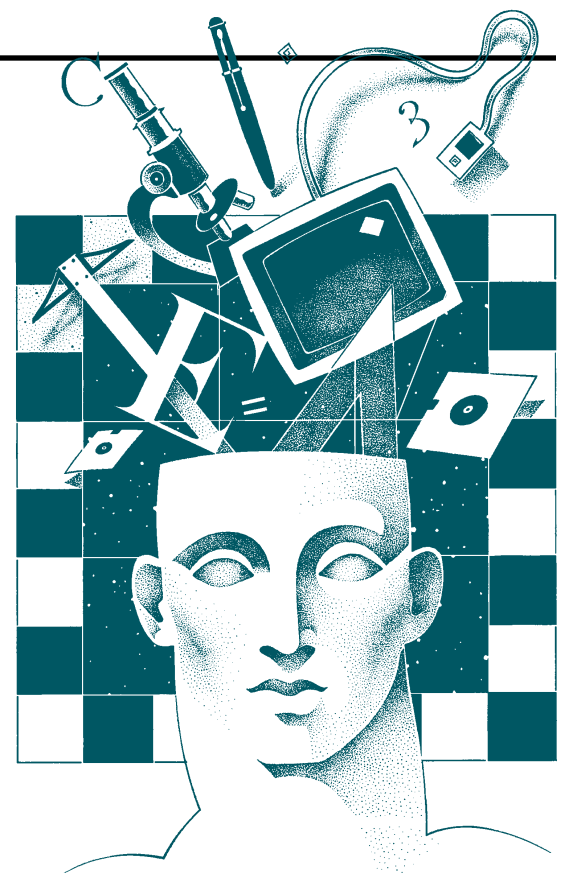
Presenter: Community Care Licensing Technical Support Team
Space is limited to 64 — Those arriving after 10:00 a.m. will be admitted only if space allows.

For information call (213) 383-1300 ext. 720

SIR REPORTING, DOCUMENTING & FOLLOW-UP

For Service Providers. This 2 hour service provider in-service will help community residential staff with appropriate special incident documentation, reporting and follow-up. This class meet the requirements for 2 hrs CEU's for Title 17 & Title 22.

May 8, 2001, 10:00 a.m.–12:00 p.m.



AGING AND DEVELOPMENTAL DISABILITIES

For Parents & Consumers
June 27, 2001

4:30 p.m.–6:00 p.m.

Lanterman Regional Center
3303 Wilshire Blvd., Suite 700, Los Angeles, CA

This training is designed to guide parents and consumers as they explore the effects of aging on issues such as Living Arrangements, Social Recreation, Daily Activities, and Health.

Cost: No cost

Presenter: LRC Aging Transition Unit Staff

For information call (213) 383-1300 ext. 720

ASSISTIVE TECHNOLOGY

The Adult Education and Career Division of LAUSD in partnership with the Assistive Technology Project of Frank D. Lanterman Regional Center have established these classes to assist the Lanterman consumers and their families. These classes are an introduction to computers and software.

Cost: No cost

Presenters: Los Angeles Unified School District

Reservations (213) 383-1300 ext. 705

ADULT (SIX CONSECUTIVE TUESDAYS)

July 10–August 14, 2001, 10:00 a.m.–12:00 p.m.
Lanterman Regional Center
3303 Wilshire Blvd., Suite 700, Los Angeles, CA

ENGLISH (FIVE CONSECUTIVE FRIDAYS)

July 13–August 17, 2001, 10:00 a.m.–12:00 p.m.
Lanterman Regional Center
3303 Wilshire Blvd., Suite 700, Los Angeles, CA

Space is limited! For registration and further information call (800) 546-3676

Lanterman Regional Center
3303 Wilshire Blvd., Suite 700, Los Angeles, CA

Cost: No cost

Presenter: LRC Quality Assurance Staff

Space is limited to 64 — Those arriving after 10:00 a.m. will be admitted only if space allows.

For information call (213) 383-1300 ext. 720

INTRODUCTION TO THE LANTERMAN QUALITY ENHANCEMENT NETWORK

For Service Providers

June 12, 2001, 10:00 a.m.–12:00 p.m.

Lanterman Regional Center
3303 Wilshire Blvd., Suite 700, Los Angeles, CA

Class meets requirements for 2 hrs CEU's for Title 17 & Title 22.

Cost: No cost

Presenter: LRC Quality Enhancement Network

Space is limited to 64 — Those arriving after 10:00 a.m. will be admitted only if space allows.

For information call (213) 383-1300 ext. 720

ADULT SIBLING SUPPORT GROUP

Call for details
Contact: Olivia Hinojosa (213) 383-1300 Ext. 705

ARMENIAN PARENT GROUP

Quarterly meetings — Glendale Area
 Call for dates & details
Contact: Rima Shahoian (818) 548-4349
Shoghig Dikjian (213) 383-1300 Ext. 546

ARMENIAN PARENT SUPPORT GROUP

Monthly meetings at group members' homes
 In the Glendale area
 Monthly — Last Friday 11:00 a.m. – 1:00 p.m.
Contact: Rima Shahoian (818) 548-4349
Shoghig Dikjian (213) 383-1300 Ext. 546

AUTISM SOCIETY OF AMERICA

San Gabriel Valley Chapter Support Group
 1167 N. Reeder Ave., Covina
 Monthly — Wednesday, 7:30 p.m.
Contact: Patricia Kreyssler (626) 447-3452

BEHAVIOR MANAGEMENT PARENT SUPPORT GROUP

Call for details
Contact: Olivia Hinojosa (213) 383-1300 Ext. 705

daDA FATHERS REGIONAL SUPPORT NETWORK

Call for details
Contact: Marty Sweeney (323) 933-2983

DE MI FAMILIA A SU FAMILIA

(Grupo para Familias con Niños con Autismo)
 Lanterman Regional Center, 3303 Wilshire Blvd., Ste. 700
 Primero miercoles de cada mes
 9:30 a.m. – 11:30 a.m.
Contact: Carlos Duque (213) 383-1300 Ext. 570
Romi Castillo (323) 463-3678

DOWN SYNDROME SAN GABRIEL VALLEY PARENT SUPPORT GROUP WITH CHILDREN UNDER SEVEN

Church of the Brethren
 1041 N. Altadena Drive, Pasadena, 91107
 Monthly — 2nd Thursday, 7:00 p.m. – 9:00 p.m.
Contact: Olivia Hinojosa (213) 383-1300 Ext. 705

EARLY INTERVENTION SPANISH SPEAKING PARENT SUPPORT GROUP

Lanterman Regional Center, 3303 Wilshire Blvd., Ste. 700
 Monthly — 2nd Wednesday, 9:30 a.m. – 11:30 a.m.
Contact: Rose Chacana (213) 383-1300 Ext. 528

FAMILIES AND FRIENDS OF PERSONS WITH DISABILITIES

St. Dominic's Community Center
 2002 Merton Ave., Eagle Rock
 Monthly — 1st Friday, 7:30 p.m.
Contact: Emma Guanlao (323) 259-8332
Esther Martinez (323) 254-6413

FILIPINO AMERICAN SPECIAL SERVICE GROUP FOR THE DEVELOPMENTALLY DISABLED

Call for details
Contact: Alice Gubatan (213) 384-2340

FOOTHILL AUTISM ALLIANCE — NETWORK RESOURCE MEETINGS

BCR-230 E. Amherst Drive, Burbank, CA 91505
 Monthly — 2nd Wednesday, 7:00 p.m.
Contact: Sue Brooks (818) 66-AUTISM (818) 662-8847

FRAGILE X PARENT SUPPORT GROUP

Call for dates and details
 Monthly, 7:00 p.m.
Contact: (818) 754-4227 Voicemail

GAY AND LESBIAN ADULT SUPPORT GROUP

Lanterman Regional Center, 3303 Wilshire Blvd., Ste. 700
 Monthly — 2nd Wednesday, 4:00 p.m. – 5:00 p.m.
Contact: Joe Perales (213) 383-1300 Ext. 592

GLENDALE /BURBANK/FOOTHILL PARENT SUPPORT GROUP

Monthly — 1st Wednesday, 10:00 a.m.
 Call for location
Contact: Jennifer Wyre (213) 383-1300 Ext. 679

GRUPO DE APOYO PARA EL MANEJO DE LA CONDUCTA

(Spanish-Speaking Behavior Management Group)
 Shriners Hospital
 3160 Geneva St. (Virgil and Third St.), Los Angeles
 Ultimo martes de cada mes, 7:00 p.m. – 9:00 p.m.
Contact: Francisca Arias (323) 965-0379
Lourdes Tabullo (213) 383-1300 Ext. 543
Patricia Rodriguez (213) 383-1300 Ext. 544

HOLLYWOOD/WILSHIRE PARENT SUPPORT GROUP

Lanterman Regional Center, 3303 Wilshire Blvd., Ste. 700
 Monthly — 3rd Tuesday, 10:00 a.m.
Contact: Theresa Edwards (323) 935-7265
Jessye Davis (213) 383-1300 Ext. 549
Ramon Martinez (213) 383-1300 Ext. 568

INCLUSION IN REGULAR CLASSES SUPPORT NETWORK

Locations and times vary each month — call for next meeting
Contact: Sam Suzuki (213) 383-1300 Ext. 559

JAPANESE-SPEAKING PARENTS ASSOCIATION OF CHILDREN WITH CHALLENGES

Little Tokyo Service Center
 231 East Third Street, Suite G-104, Los Angeles, CA 90013
 Monthly — 3rd Saturday, 9:30 a.m.
Contact: Mariko Magami (818) 249-1726
Michiko Wilkins (818) 557-0728

KOREAN PARENT SUPPORT GROUP

Asian Advocate for Special People
 Lanterman Regional Center
 3303 Wilshire Blvd., Ste. 700
 Monthly — 2nd Monday, 6:30 p.m. – 8:30 p.m.
Contact: Suki Chang (213) 999-3981
Susan Han (213) 383-1300 Ext. 545
Alanah Kim (213) 383-1300 Ext. 531

"PADRES UNIDOS LANTERMAN"

Spanish-Speaking Support Group (Grupo en Español)
 Children's Hospital of Los Angeles, Conference Room "D"
 Monthly — 2nd Tuesday, 7:00 p.m. – 9:00 p.m.
Contact: Joe Perales (213) 383-1300 Ext. 592

REACH

(Respecting Encouraging and Affirming Choices in Housing)
 2606 Foothill Blvd., La Crescenta, CA 91214
 Monthly — 3rd Wednesday, 7:00 p.m.
Contact: Maria Leinenweber (818) 248-8624
Emma Guanlao (323) 259-8332

RETT SYNDROME SUPPORT GROUP

Pasadena Area. Quarterly Meetings
 Call for dates and details
Contact: Marie Hyland (626) 790-4836
Pep Stenberg (626) 355-5334

"LA ESPERANZA"

Spanish-Speaking Parent Group (Grupo Semanal en Español)
 Lanterman Regional Center, 3303 Wilshire Blvd., Ste. 700
 Weekly — Monday, 9:00 a.m.
Contact: Yolanda Hernandez (562) 928-5324
Primitivo Jacobo (323) 464-3689
Bertha Rios (323) 666-3489
Nilda Lopapa (213) 383-1300 Ext. 554

SPANISH-SPEAKING PARENT SUPPORT GROUP

Salvin Special Education Center
 1925 S. Budlong Ave., Los Angeles
 Call for dates, 9:30 a.m. – 11:30 a.m.
Contact: Gloria Perez (213) 383-1300 Ext. 556

TEATRO ILUSIÓN

(Grupo Semanal en Español)
 Shriners Hospital
 3160 Geneva St. (Virgil and Third St.), Los Angeles
 Weekly — Fridays, 6:00 p.m. – 8:00 p.m.
Contact: Yolanda Hernandez (562) 928-5324

NEW GROUP

GRUPO PARA FAMILIAS CON NIÑOS CON PRADER-WILLIE

Shriners Hospital
 3360 Geneva St. (Virgil & Third St.),
 Los Angeles
 Monthly — Last Friday, 7:00 p.m. – 9:00 p.m.
Contact: Mercedes Rivera (213) 383-4402

MEETING SCHEDULE

COMMUNITY ADVISORY COUNCILS

Our Community Advisory Councils serve as a link to the community. They provide input on policies, services and programs and offer opportunities for consumers, parents, service providers and staff to network. If you have an interest in serving in the council for your area or in attending meetings, contact:
Lanterman Regional Managers at (213) 383-1300.

GLENDALE REGION

Second Tuesday of the month. 6:30 – 8:00 p.m.
John Stack Ext. 620

HOLLYWOOD/WILSHIRE/CENTRAL REGION

Third Tuesday of the month. 10:00 – 11:30 a.m.
Sam Suzuki Ext. 559

PASADENA REGION

Third Tuesday of the month. 6:30 – 8:00 p.m.
M.J. Kienast Ext. 617

If you are interested in starting a support group but don't know how to take the first step, call The Koch•Young Family Resource Center for information: 1-800-546-3676

Peer Health Advocates for Women Program

The Lanterman-UCLA Reproductive Health and Self-Advocacy Project was created to improve the health of women with developmental disabilities. Lanterman is currently looking for women consumers who want to gain leadership skills and teach other consumers about women's health and using self-advocacy with doctors. No experience is necessary.

Becoming a Peer Advocate is an excellent volunteer opportunity. In addition to helping others and learning new skills, you will participate in fun social activities and meet new friends. As a reward for your efforts, you may receive small gifts such as movie tickets, restaurant coupons, and gift certificates.

The program will be starting soon, so please apply as quickly as possible. How do you sign up to become a Peer Advocate? Talk with

Lanterman Self-Advocacy Groups

MID-WILSHIRE SELF-ADVOCACY GROUP

Lanterman Regional Center
 3303 Wilshire Blvd. Suite 700
 Monthly — First Monday, 4:00 p.m. – 6:00 p.m.
Contact: Erick Homiak (323) 654-7146

THE ACHIEVERS

711 E. Maple St., Glendale, CA 91205
 Call for Dates and Times
Contact: Jack Riggle

PASADENA SELF-ADVOCACY GROUP

529 N. Hill Ave., Pasadena, CA 91106
 Call for Dates and Times
Contact: Ara Bezjian (626) 793-1989
bezara@visto.com

VILLA ESPERANZA SELF-ADVOCACY GROUP

2116 E. Villa, Pasadena, CA 91107
 Call for Dates and Times
Contact: Kelly White (626) 449-2919

If you would like more information on Lanterman's Self-Advocacy Groups, please contact John Stack at (213) 383-1300 ext. 620.

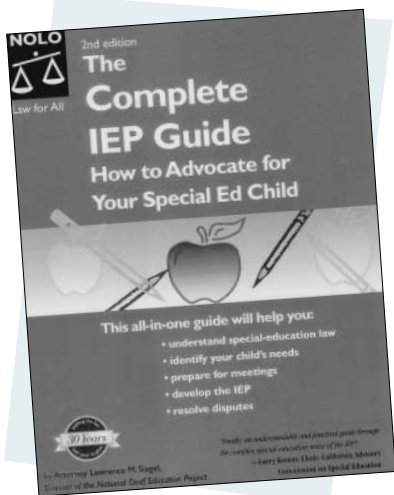
New Resources In The FRC Library

These are just a few of the new items now available in the FRC:

The Complete IEP Guide — How to Advocate for Your Special Ed Child

by Lawrence M. Siegel

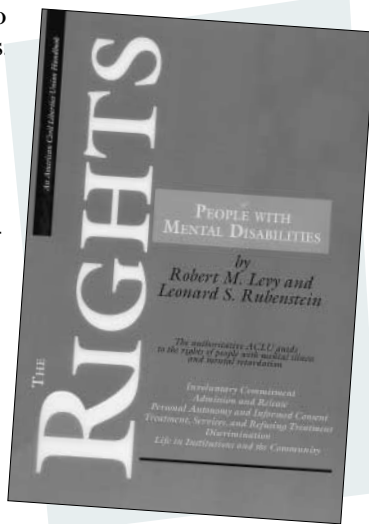
The Complete IEP Guide gives families and caregivers information on all aspects of the IEP process. Chapters include an Introduction on Special Education, an Overview of the IEP and Special Education Law, Getting Organized, Assessments, Writing Goals and Objectives, Resolving IEP Disputes Through Due Process and much, much more. The book uses topic headings in each chapter to easily guide a parent or caregiver to the information they are looking for. The Guide also contains appendices on Special Education Law, Support Groups and Resources and tear-out forms.



The Rights of People with Mental Disabilities

by Robert M. Levy and Leonard S. Rubenstein

An American Civil Liberties Union handbook, this guide to the rights of people with mental illness and mental retardation is broken into eight sections. Each section uses a simple question and answer format to cover topics including Procedures for Admission and Release, Personal Autonomy, Informed Consent, the Right to Refuse Treatment, and the Right to be Free from Discrimination. The book also includes a list of state and national resources.



Artist: Juli, age 6

SPECIAL NEEDS CONFERENCE

Featuring
Dr. T. Berry Brazelton

July 20–21, 2001

Hilton Glendale Hotel
100 West Glenoaks Boulevard,
Glendale, California

For more information, call
Maureen Wilson at (213) 383-1300 ext. 719

Board Welcomes Your Attendance at Its Meetings

Please be aware that anyone in the community is welcome to attend the Regional Center Board of Directors meeting which is conducted on the fourth Wednesday of every month at 6:00 p.m. Meetings are held at Lanterman Regional Center. Please call Frank Lara in advance at (213) 383-1300, ext. 665 so that you can be put on the list of attendees. We look forward to your visit.

Printed on recycled paper

You Spoke, We Listened1

From the President1

Roberta Louise Hoppe2

The Lanterman Board: Profiles in Commitment3

Biz2Biz.com Partners with Lanterman3

HOPE Worldwide Partners with Lanterman3

Summer Recreation Opportunities4

One System, One Focus5

Great Information with a Click of Your Mouse!5

2000 Holidays Are For Sharing5

Training & Events6

Someone Cares7

Peer Health Advocates for Women Program7

New Resources in the FRC Library8

Save the Date: Touchpoints8

Board Welcomes Your Attendance8

IN THIS ISSUE

FRANK D. LANTERMAN REGIONAL CENTER
3303 Wilshire Blvd., Suite 700
Los Angeles, CA 90010

PRSRT STD
U.S. Postage
PAID
Permit 1907
Van Nuys CA